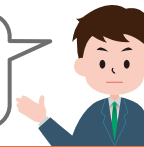


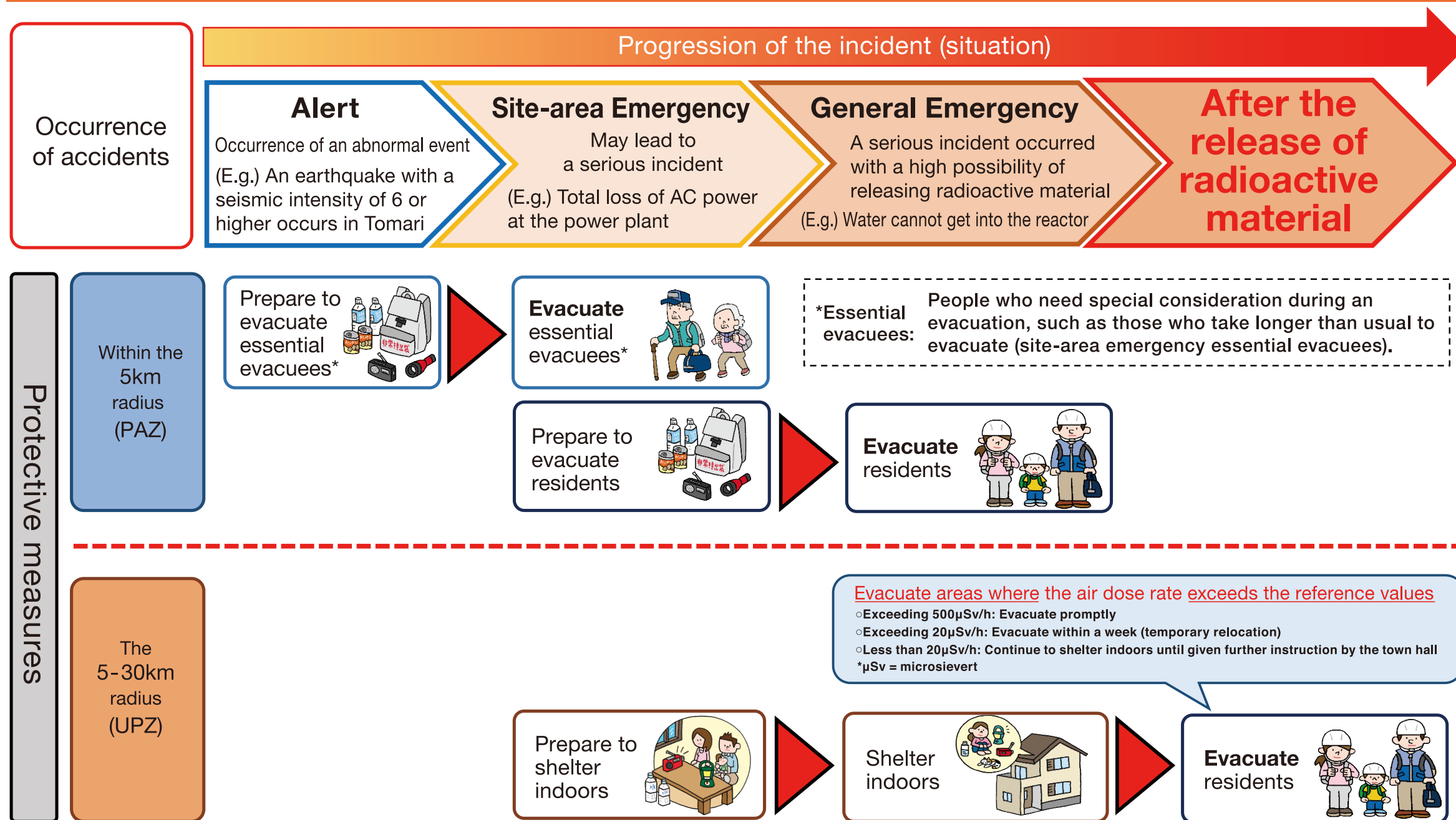
Emergency instructions and other necessary information are promptly relayed to residents via national, prefectural, or local TV, radio, and the Central Disaster Management Radio.



## "When and how to act" in the case of an incident at a nuclear power plant [Chart of protective measures]

\*Please follow the instructions from your local town or city hall in line with the progression of the incident (situation) at the nuclear power plant.

\*For details on evacuation shelters, please contact your local town or city hall.



\*If you live outside the 30km radius, you may be instructed to shelter indoors depending on the situation.

### Definition of Terms

#### Evacuation

An urgent implementation to quickly get away from a site where the air dose rate is, or may become, high.

#### Temporary relocation

An evacuation is implemented over a certain period (approx. one week) to reduce unnecessary exposure to radiation caused by continuing to live at a site where the air radiation dose rate is lower than the areas requiring urgent evacuation.

#### Sheltering

Remaining inside residences, public facilities, or other buildings to prevent inhaling radioactive materials and radiation.

#### Screening at the time of evacuation

A test to measure the adherence of radioactive materials for persons who evacuated after radioactive material has been released, to make sure that they are safe to move to evacuation shelters or other places.

### 2023 Nuclear Incident Disaster Drill

A nuclear incident disaster drill will be held to improve the cooperation of disaster prevention-related organizations and the skills of disaster prevention-related personnel, as well as promote resident awareness of nuclear disaster prevention and deepen their understanding of disaster prevention measures. This will allow disaster prevention-related organizations to cooperate to smoothly take nuclear disaster prevention measures.

**[Date and Time]** October 25 (Wed), 2023  
8:30-15:30 (estimate)

#### Description

○Resident evacuation to shelters and indoor sheltering

[Municipalities subject to evacuation drill]:

PAZ (Tomari, Kyowa)  
UPZ (Iwanai, Suttu, Rankoshi, Niseko)

○Public information training

• Public information via Central Disaster Management Radio, etc.

○Nuclear disaster treatment action training

• Screening at the time of evacuation

○Nuclear disaster treatment action training

• Screening at the time of evacuation

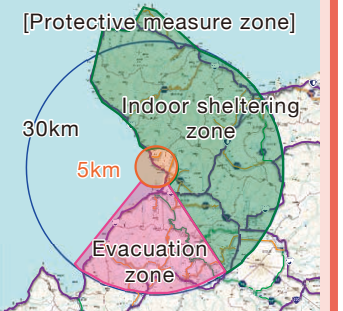
○Nuclear disaster treatment action training

• Screening at the time of evacuation

\*Reference

Previous nuclear disaster prevention drill video (YouTube link)

<https://www.pref.hokkaido.lg.jp/sm/gat/douganope-ji.html>



### Nuclear disaster prevention-related topics

#### Let's learn about nuclear disaster prevention measures!

To prepare for the unlikely event of a nuclear disaster, we have created a video that summarizes basic approaches to nuclear disaster countermeasures and actions that residents should take in the event of a disaster. Please see the video posted on the Hokkaido homepage (YouTube link).

To prepare for a nuclear disaster (video)

<https://www.pref.hokkaido.lg.jp/sm/gat/douganope-ji.html>



### Nuclear disaster prevention-related trivia

#### About emergency monitoring

Emergency monitoring refers to the measurement of radiation dose when an accident occurs at a nuclear power plant.

Emergency monitoring sites are set for each evacuation zone so that target areas for evacuation can be quickly determined in the event of a nuclear disaster.

#### The results of air dose rate measurements are reported in real-time.

The air dose rate measurement results can be viewed on the Hokkaido Nuclear Environment Center homepage.

You can also view it via the monitor installed in the lobby, etc., of town or city halls.

<https://www.pref.hokkaido.lg.jp/sm/gkc>



### What to Do if a Ballistic Missile Drops

#### Cabinet Secretariat Civil Protection Portal Site

Make sure you know what to do in advance to protect yourself in case of armed attacks or terrorism.

[http://www.kokuminhogo.go.jp/gaiyou/shiryou/hogo\\_manual.html](http://www.kokuminhogo.go.jp/gaiyou/shiryou/hogo_manual.html)

\*Source: Civil Protection Portal Site

