

Take Extra Care

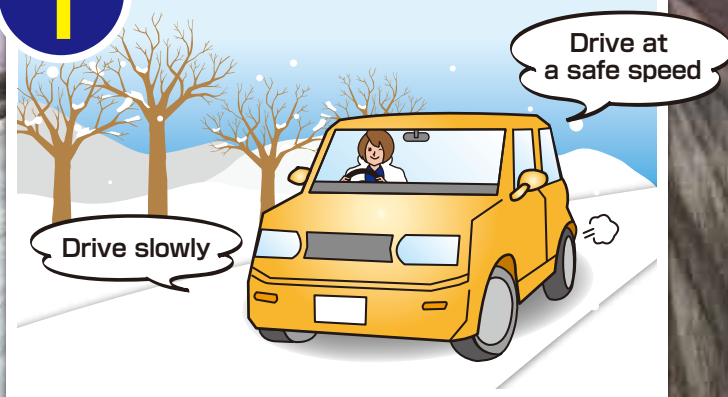
on Slippery

Winter Roads

Pay particular attention on bridges, in tunnels, in shaded areas, and in mountainous areas which can be especially slippery!

Four key points for safe winter driving

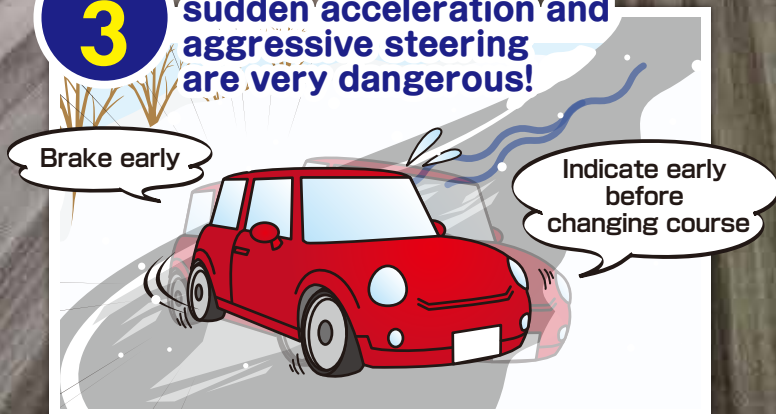
POINT 1 Slow down and drive carefully!



POINT 2 Keep a safe distance between yourself and the car ahead—at least double the normal distance!



POINT 3 Remember that sudden braking, sudden acceleration and aggressive steering are very dangerous!



POINT 4 Be careful at/near intersections where ice and snow tend to melt!



The map of “Skidding Accidents Roads” is now available!

We made the map of places where traffic accidents frequently occur, which is caused by skidding on the icy roads, and the map is available on the web!

Click here to access!



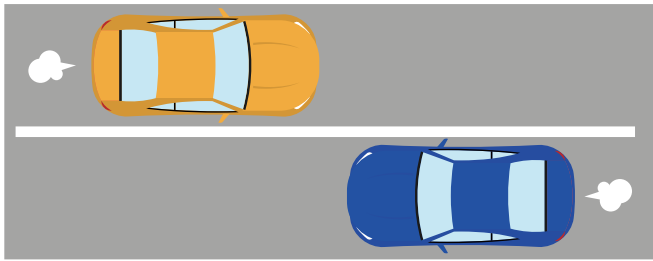
|| The General Insurance Association of Japan || Hokkaido Prefectural Police
|| Hokkaido Government || The Union of Rent-Car Associations of Hokkaido Area

Aioi Nissay Dowa Insurance Co., Ltd. AIG General Insurance Company, Ltd. The Kyoei Fire & Marine Insurance Co., Ltd.
SECOM General Insurance Co., Ltd. Sony Assurance Inc. Sompo Japan Insurance Inc. Tokio Marine & Nichido Fire Insurance Co., Ltd.
Nisshin Fire & Marine Insurance Co., Ltd. Mitsui Sumitomo Insurance Co., Ltd. (As of November, 2023)

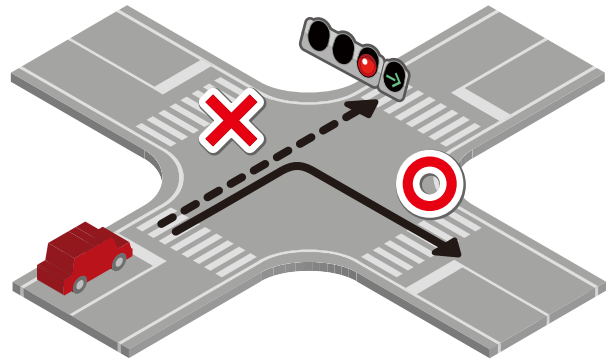
Information to tourists-Know Japanese traffic rules to enjoy sightseeing in Hokkaido!

Japanese traffic rules

1. Japan has a left-hand traffic system. Be careful not to drive on the right side.



2. Stop at a red light unless there is a green arrow.



3. Stop before the stop line at an intersection with a "stop" sign. Note: "Stop" does not mean "give way" in Japan.



To drive safely in Hokkaido

Drive slowly!

Hokkaido covers a vast area with long roads that connect cities.

Although these roads generally have wide traffic lanes and few traffic lights in the suburbs, do not exceed the maximum speed limits. Remember, by driving slowly you have the benefit of viewing Hokkaido's beautiful landscapes longer!



Beware of slipping in winter!

When driving on icy or snowy roads, the stopping distance can be about 10 times that on dry roads. Sudden actions often cause loss of control over a vehicle. Slow down and keep a safe distance!

